

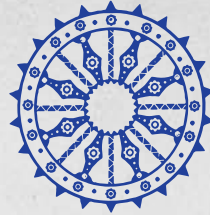


KONARK GROUP



GANGA NIWAS C.H.S

Pherozechah Mehta Road, Vile Parle (E) Mumbai - 400057.



KONARK GROUP

ABOUT US

From well-crafted residences to avant-garde spaces, Konark Group of Companies has always delivered state-of-the-art construction that illustrates a blend between traditional and ultra-modern concepts. While Konark Group completely ensures safety, advanced use of technology and new-fashioned themes, we also keep a greater balance with nature and greens.

The inception of our company is an outcome of more than two decades of first hand, on field & consulting experience earned by its very principal founders, Mr. Jitendra Parmar (director) accompanied by his wife, Mrs. Shilpa Parmar a structural engineering by profession, who has formed the very pillars of this organization.

Mr. Jitendra M Parmar, founded the Konark Group of Companies in 1990. A first-generation entrepreneur, his vision was to create defining infrastructure landmarks contributing to the larger cause of nation building. Starting with Real Estate.

As the firm developed, there was a greater need for strong and supporting partners in order for the company to succeed and achieve new heights. Mr. Ketan Gala and Mr. Prajesh Shah joined as partners in the Konark Group of Companies to fulfil the objective that they all shared.

We today, are considered as one of the most innovative developers and builders in Mumbai suburbs. Having served some of the most prestigious clientele, our founders know exactly how and what can best fit your interest. The Group has scaled new heights by acquiring several properties and developing them independently and has carved a niche for the quality of construction and the modern amenities provided therein.

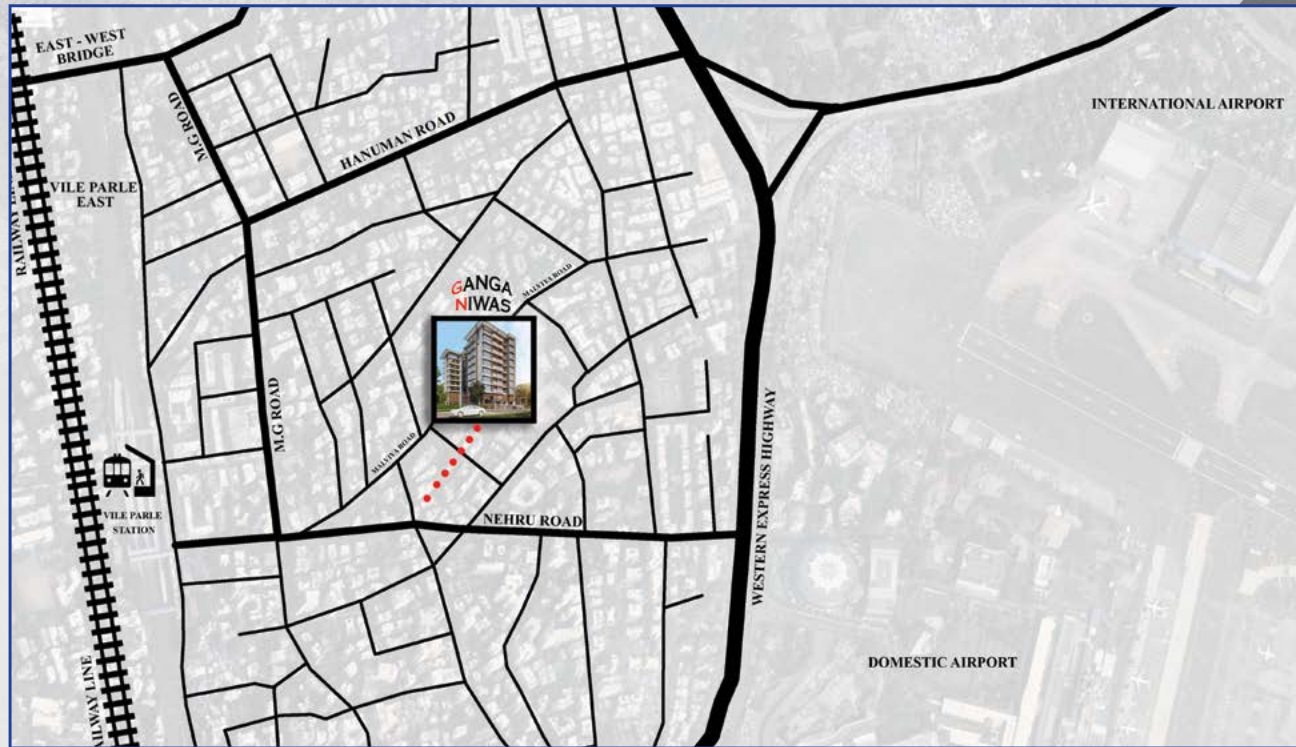
Ganga Niwas, a forthcoming residential project in the heart of Vile Parle East, is poised to redefine urban living with its blend of modern amenities and natural tranquility. Nestled in a prime location, this development promises to be a haven for those seeking a harmonious balance between city life and peaceful abode.

Situated strategically in Vile Parle East, Ganga Niwas offers residents the convenience of proximity to essential amenities such as schools, hospitals, shopping centers, and transportation hubs. The location ensures easy access to both the vibrant city life and serene natural surroundings.



KONARK GROUP





Commuting Options Within 1 – 2 kms*

- ◆ Western Express highway ◆ Metro station
- ◆ International & Domestic Airports
- ◆ Train station

Education Insitutes within 1 – 2 kms*

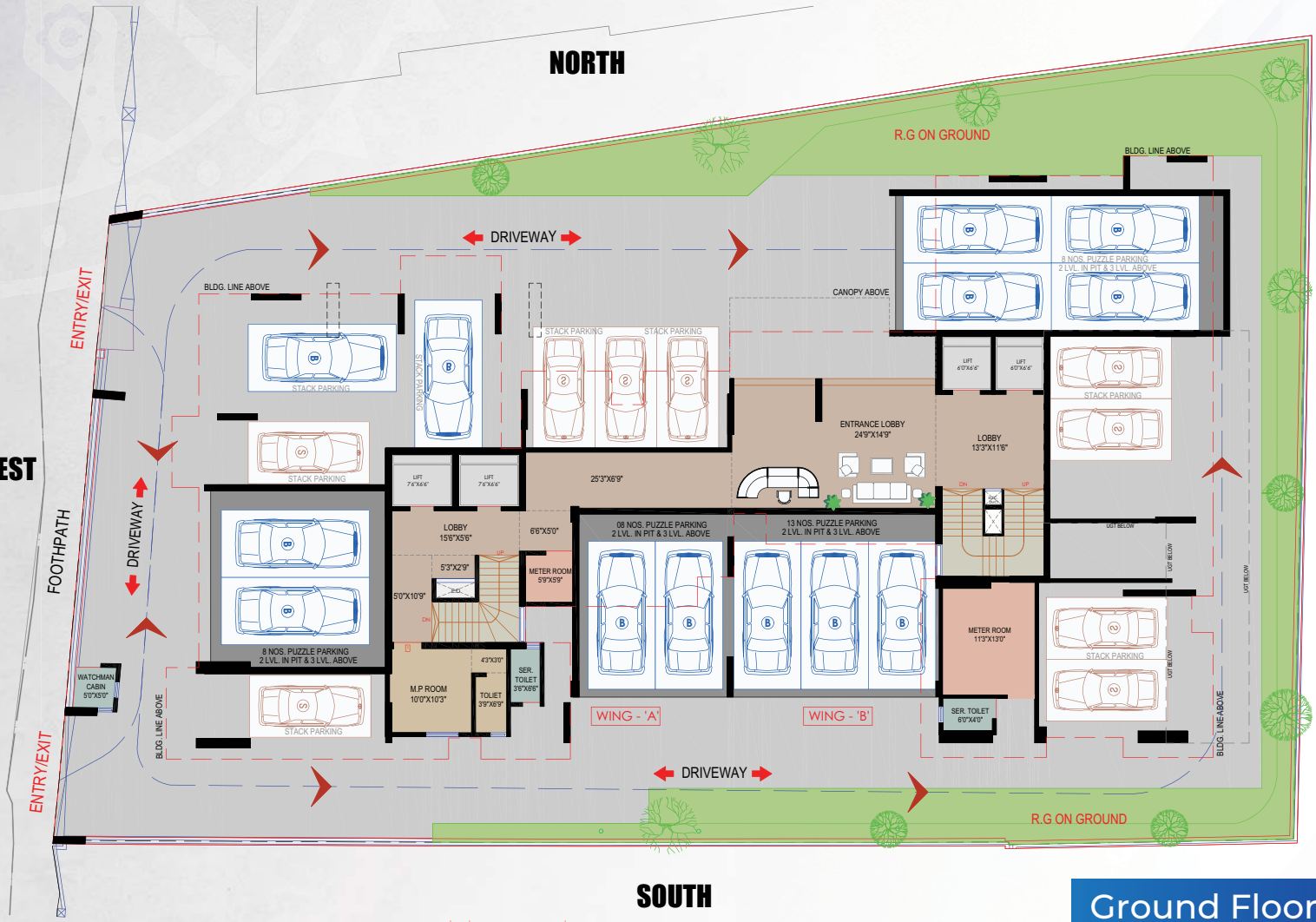
- ◆ C.N.M.S School ◆ Jamnabai Mithibai
- ◆ N.M. College ◆ Sathe College

Medical Facilities within 1 – 2 kms*

- ◆ KLS Memorial ◆ Four Care Hospital
- ◆ Cooper Hospital ◆ Shirodkar Hospital
- ◆ Nanavati Hospital

Temples within 0.1 – 1 kms*

- ◆ Jain Mandir ◆ Hanuman Mandir
- ◆ Ganesh Mandir ◆ Shiv Mandir



Ground Floor Plan



Typical Floor Plan



Terrace Layout Plan



LUXURY RESIDENCES



LUXURY RESIDENCES



Wing 'A' - 8th Floor

Where opulence meets tranquility in the heart of the city. Perched atop the illustrious building is a masterpiece of luxury living – a combined luxurious flat that redefines the concept of lavish urban living.

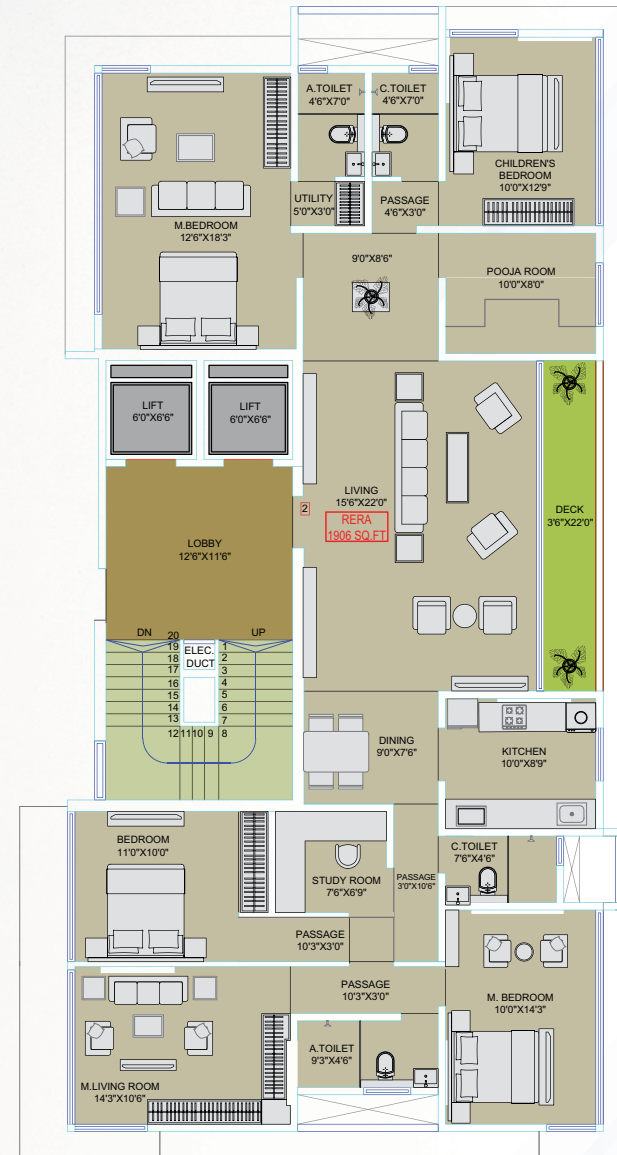
Welcome to a life of unparalleled luxury at Ganga Niwas – where the sky is not the limit, but the beginning of a lifestyle defined by extravagance and sophistication.



Wing 'B' - 8th Floor

As you enter through the private foyer, the opulence is immediately evident. The expansive living space is adorned with tasteful contemporary furnishings, accentuated by panoramic windows that frame commanding views of the cityscape.

Ganga Niwas's top-floor haven is more than just a residence; it is a lifestyle statement. Seamlessly integrated throughout, every aspect of daily living is elevated to the pinnacle of convenience and sophistication.





**'A' Wing
Flat No.1
2.5 BHK
788sq.ft. RERA**



**'A' Wing
Flat No.2
3 BHK
1090sq.ft. RERA**



**'A' Wing
Flat No.3
2 BHK
658sq.ft. RERA**



**'B' Wing
Flat No.1
2 BHK
505sq.ft. RERA**



**'B' Wing
Flat No.2
3 BHK
850sq.ft. RERA**



**'B' Wing
Flat No.3
3.5 BHK
1055sq.ft. RERA**



Flat Features

- ◆ Vitrified flooring
- ◆ Internal walls treated with acrylic paint
- ◆ Anodized Aluminium Sliding windows
- ◆ Room & Bedrooms
- ◆ Provision for electrical points

General Amenities

- ◆ Entrance Lobby with superior finishes
- ◆ Branded elevators
- ◆ Ample Parking
- ◆ Rain Water harvesting



Kitchen Features

- ◆ Granite platform with stainless steel sink
- ◆ Tiled dado above platform
- ◆ Additional service platform in granite
- ◆ Provision for water purifier

Bathroom Features

- ◆ Designer flooring
- ◆ Designer tiled dado up to door height
- ◆ Naturally Ventilated bathrooms



Prime Location: Ganga Niwas is strategically located in the heart of Vile Parle East, ensuring residents enjoy proximity to key amenities, educational institutions, healthcare facilities, and transportation hubs.

Thoughtful Design: Each residence at Ganga Niwas is thoughtfully designed to maximize space utilization and provide a harmonious living environment. The architecture reflects a perfect synergy of modern aesthetics and functional design.

Amenities for a Modern Lifestyle: Residents can indulge in a plethora of amenities, including a well-equipped fitness center, landscaped gardens, children's play area, and dedicated spaces for recreation and relaxation.

Proximity to Infrastructure: Ganga Niwas residents enjoy seamless connectivity to major transportation arteries, educational institutions, healthcare facilities, shopping centers, and entertainment hubs.



Developed By



KONARK GROUP

Konark Royale, 1st Floor, 102, Ramabai Chemburkar Marg,
Off Subhash Road, Vile Parle (E), Mumbai - 400057.

Project Architect
ANJ Consulting LLP

Legal Advisor
M/S Rajesh Sharma and Associates

Structural Consultant
M/S Shilpi Structural

Conceptual Architect
Ar. Hemal Shah

Disclaimer: The images displayed in the brochure are purely conceptual and not legal offering to its recipient by the promoter / developer nor will it be a part of any binding agreement. All units are unfurnished and furnishing show is for aesthetic representation purposes only and is not a part of the flat/unit offered for sale.